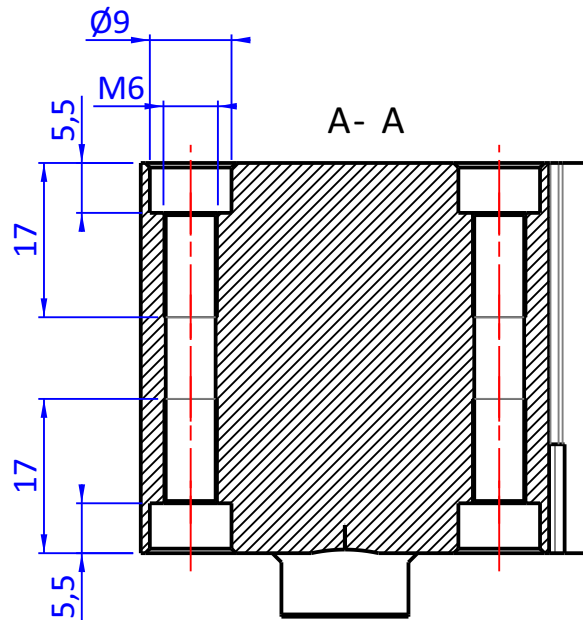
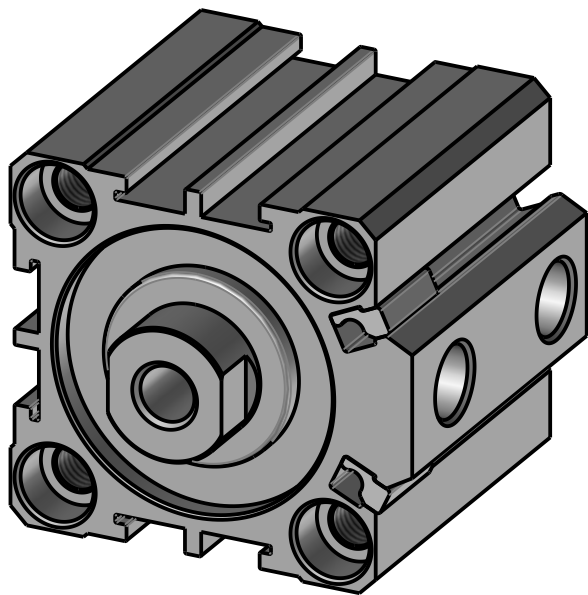
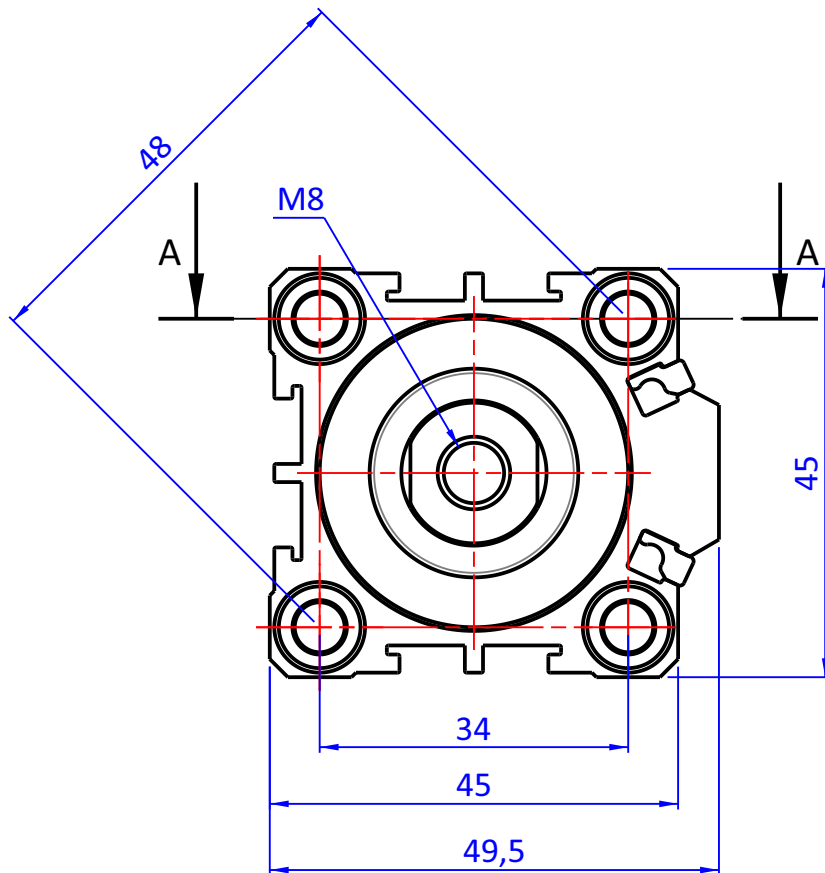
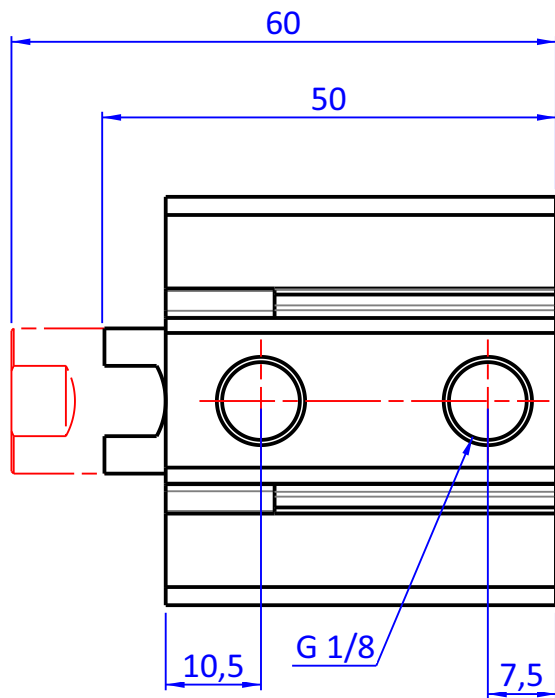
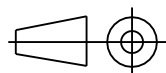


THE PROPERTY OF THE DRAWING IS ESTABLISHED BY LAW. IT IS FORBIDDEN TO PRODUCE OR SHOW IT TO THIRD PART. WITHOUT A WRITTEN AGREEMENT.



STROKE 10mm



DESIGNED FROM

FPS Automation

REVIEW

A

DATE

05/01/2026

WEIGHT

0,202kg

CODE

CA.CCB.3210

Format A4

UNI 936-76

GENERAL TOLERANCE

UNI - ISO 2768

CLASSE f

DESCRIPTION

CA.CCB.3210